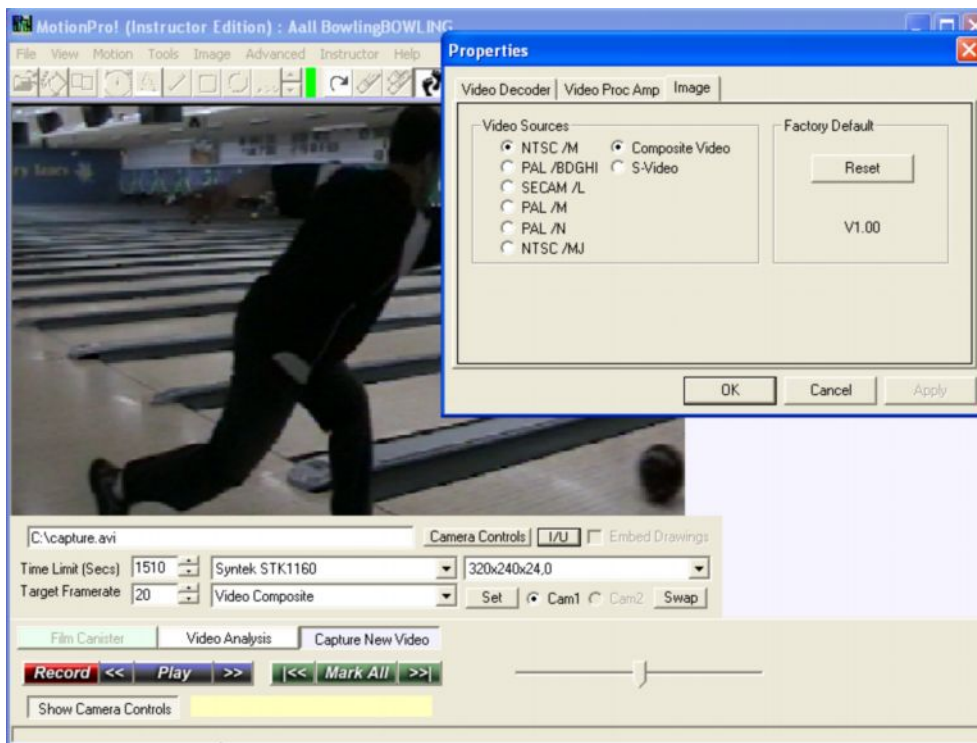


## Installing and settings for USB Devices with MotionPro!

- 1) Install your Drivers for your USB Device. It is not necessary to install the software that comes with the device, since you are using MotionPro!
- 2) Plug the device in a USB port only after the driver is installed.
- 3) Plug your camera into the Device (Yellow-Video, red/white – Audio or S-Video)
- 4) Start MotionPro and go to Capture new Video.
- 5) Click on Show Camera Controls button on the bottom right of the screen.
- 6) Click on I/O and click on Image.
- 7) For North America you need to set the Video Sources to NTSC/M. (Europe Pal)
- 8) If you are using the Yellow, red or white, select Composite Video  
If you are using S-Video, select S-Video. Click OK.
- 9) Set Target Framereate to 20
- 10) Set the screen size to 320x240 and click on the Set button.

The example below show the setting for a USB device using the yellow, red, and white Composite cables. (NTSC /M and Composite Video are set)



This will setup your device to record correctly and more effectively.